



IN PARTNERSHIP WITH:
CNRS

Ecole Polytechnique

Activity Report 2013

Project-Team DEFI

Shape reconstruction and identification

IN COLLABORATION WITH: Centre de Mathématiques Appliquées (CMAP)

RESEARCH CENTER
Saclay - Île-de-France

THEME
Numerical schemes and simulations

Table of contents

1. Members	1
2. Overall Objectives	2
2.1. Overall Objectives	2
2.2. Highlights of the Year	2
3. Research Program	2
4. Application Domains	5
4.1. Radar and GPR applications	5
4.2. Biomedical imaging	5
4.3. Non destructive testing and parameter identification	6
4.4. Diffusion MRI	6
5. Software and Platforms	7
5.1. RODIN	7
5.2. FreeFem++ Toolboxes	7
5.2.1. Shape optimization toolbox in FreeFem++	7
5.2.2. Eddy current problems	7
5.2.3. Contact managements	7
5.2.4. De-Homogenization	7
5.3. Scilab and Matlab Toolboxes	8
5.3.1. Shape optimization toolbox in Scilab	8
5.3.2. Conformal mapping method	8
5.4. Sampling methods for inverse problems	8
5.4.1. Samplings-2d	8
5.4.2. Samplings-3d	8
5.4.3. Time domain samplings-2d	8
5.4.4. Factorization Method for EIT	9
5.5. BlochTorreyPDESolver	9
6. New Results	9
6.1. Qualitative methods for inverse scattering problems	9
6.1.1. A generalized formulation of the Linear Sampling Method	9
6.1.2. Inverse problems for periodic penetrable media	9
6.1.3. Transmission Eigenvalues and their application to the identification problem	10
6.1.4. The factorization method for inverse scattering problems	10
6.1.4.1. The factorization method for cracks with impedance boundary conditions	10
6.1.4.2. The factorization method for EIT with uncertain background	10
6.1.4.3. The factorization method for GIBC	10
6.2. Iterative Methods for Non-linear Inverse Problems	11
6.2.1. Inverse medium problem for axisymmetric eddy current models	11
6.2.2. The conformal mapping method and inverse scattering at low frequencies	11
6.2.3. A steepest descent method for inverse electromagnetic scattering problems	11
6.3. Shape and topology optimization	11
6.3.1. Geometric shape optimization	11
6.3.2. Worst-case design shape optimization	12
6.3.3. Multi-phase structural optimization	12
6.3.4. Level-Set Method	12
6.3.5. Optimization of a sodium fast reactor core	12
6.4. Asymptotic Analysis	13
6.4.1. Effective boundary conditions for thin periodic coatings	13
6.4.2. Homogenization of electrokinetic models in porous media	13
6.4.3. A new shell modeling modeling	13

6.4.4. A new Liouville type Rigidity Theorem	13
6.5. Diffusion MRI	14
7. Bilateral Contracts and Grants with Industry	15
7.1. Bilateral Contracts with Industry	15
7.2. Bilateral Grants with Industry	15
8. Partnerships and Cooperations	16
8.1. National Initiatives	16
8.2. European Initiatives	16
8.3. International Initiatives	16
8.3.1. Inria Associate Teams	16
8.3.2. Inria International Partners	17
8.3.3. Participation In other International Programs	17
8.4. International Research Visitors	17
8.4.1.1. Sabbatical	17
8.4.1.2. Internships	17
9. Dissemination	17
9.1. Scientific Animation	17
9.1.1. Conference / school organization	17
9.1.2. Conference attendance	18
9.2. Teaching - Supervision - Juries	18
9.2.1. Teaching	18
9.2.2. Supervision	19
10. Bibliography	19

Project-Team DEFI

Keywords: Inverse Problem, Scientific Computation, Shape Optimization, Waves

Our EPI is located at the Center of Applied Mathematics (CMAP), Ecole Polytechnique.

Creation of the Project-Team: 2009 January 01.

1. Members

Research Scientists

Houssem Haddar [Team leader, Inria, Senior Researcher, HdR]

Jing-Rebecca Li [Inria, Researcher, HdR]

Faculty Members

Grégoire Allaire [Ecole Polytechnique, Professor, HdR]

Olivier Pantz [Ecole Polytechnique, Professor, HdR]

PhD Students

Lorenzo Audibert [EDF]

Gabrielle Fournet [Inria, granted by ANR CIACM project, from Nov 2013]

Matteo Giacomini [Ecole Polytechnique, from Nov 2013]

Harsha Hutridurga Ramaiah [Ecole Polytechnique, until Sep 2013]

Zixian Jiang [Inria]

Mohamed Lakhil [Ecole Polytechnique, from Jan 2014]

Thibaud Mercier [EDF]

Giovanni Migliorati [Co-tutelle Ecole Polytechnique-Ecole Polytechnique de Milan]

Hang Tuan Nguyen [Inria, granted by ANR SIMUDMRI project]

Thi Phong Nguyen [Inria, granted by ANR METAMATH- project, from Mar 2013]

Dang Nguyen Van [Inria, until Oct 2013]

Tobias Rienmüller [Co-tutelle Ecole Polytechnique-University of Bremen]

Simona Schiavi [Inria, from Sep 2013]

Post-Doctoral Fellows

Fédérico Benvenuto [Inria, granted by GEIE ERCIM, from Oct 2013]

Dinh Liem Nguyen [Inria, granted by ANR METAMATH- project, until Dec 2013]

Mohamed Kamel Riahi [Inria]

Visiting Scientists

Yassine Boubendir [Digiteo, from Oct 2013]

Ozgur Ozdemir [Istanbul Tech. Univ., until Sep 2013]

Administrative Assistants

Wallis Chaussebourg [CNDP Poitou, from Sep 2013]

Jessica Gameiro [Inria, from Oct 2013]

Others

Ahmed Aaddaj Eloudrhiri [Inria, Internship, from Feb 2013 until Jun 2013]

Isaac Harris [Inria, Internship, from May 2013 until Jul 2013]

Shixu Meng [Inria, Internship, from May 2013 until Aug 2013]

2. Overall Objectives

2.1. Overall Objectives

The research activity of our team is dedicated to the design, analysis and implementation of efficient numerical methods to solve inverse and shape/topological optimization problems in connection with acoustics, electromagnetism, elastodynamics, and diffusion.

Sought practical applications include radar and sonar applications, bio-medical imaging techniques, non-destructive testing, structural design, composite materials, and diffusion magnetic resonance imaging.

Roughly speaking, the model problem consists in determining information on, or optimizing the geometry (topology) and the physical properties of unknown targets from given constraints or measurements, for instance, measurements of diffracted waves or induced magnetic fields.

In general this kind of problems is non-linear. The inverse ones are also severely ill-posed and therefore require special attention from regularization point of view, and non-trivial adaptations of classical optimization methods.

Our scientific research interests are the following:

- Theoretical understanding and analysis of the forward and inverse mathematical models, including in particular the development of simplified models for adequate asymptotic configurations.
- The design of efficient numerical optimization/inversion methods which are quick and robust with respect to noise. Special attention will be paid to algorithms capable of treating large scale problems (e.g. 3-D problems) and/or suited for real-time imaging.
- Development of prototype softwares for specific applications or tutorial toolboxes.

During the last four years we were particularly interested in the development of the following themes that will be presented in details later.

- Qualitative methods for inverse scattering problems
- Iterative and Hybrid inversion methods
- Topological optimization methods
- Direct and inverse models for Diffusion MRI
- Asymptotic models and methods for waves and diffusion.

2.2. Highlights of the Year

G. Allaire received the 2013 Dargelos Prize of AX, the alumni association of Ecole Polytechnique.

3. Research Program

3.1. Research Program

The research activity of our team is dedicated to the design, analysis and implementation of efficient numerical methods to solve inverse and shape/topological optimization problems in connection with wave imaging, structural design, non-destructive testing and medical imaging modalities. We are particularly interested in the development of fast methods that are suited for real-time applications and/or large scale problems. These goals require to work on both the physical and the mathematical models involved and indeed a solid expertise in related numerical algorithms.

This section intends to give a general overview of our research interests and themes. We choose to present them through the specific academic example of inverse scattering problems (from inhomogeneities), which is representative of foreseen developments on both inversion and (topological) optimization methods. The practical problem would be to identify an inclusion from measurements of diffracted waves that result from the interaction of the sought inclusion with some (incident) waves sent into the probed medium. Typical applications include biomedical imaging where using micro-waves one would like to probe the presence of pathological cells, or imaging of urban infrastructures where using ground penetrating radars (GPR) one is interested in finding the location of buried facilities such as pipelines or waste deposits. This kind of applications requires in particular fast and reliable algorithms.

By “imaging” we shall refer to the inverse problem where the concern is only the location and the shape of the inclusion, while “identification” may also indicate getting informations on the inclusion physical parameters.

Both problems (imaging and identification) are non linear and ill-posed (lack of stability with respect to measurements errors if some careful constrains are not added). Moreover, the unique determination of the geometry or the coefficients is not guaranteed in general if sufficient measurements are not available. As an example, in the case of anisotropic inclusions, one can show that an appropriate set of data uniquely determine the geometry but not the material properties.

These theoretical considerations (uniqueness, stability) are not only important in understanding the mathematical properties of the inverse problem, but also guide the choice of appropriate numerical strategies (which information can be stably reconstructed) and also the design of appropriate regularization techniques. Moreover, uniqueness proofs are in general constructive proofs, i.e. they implicitly contain a numerical algorithm to solve the inverse problem, hence their importance for practical applications. The sampling methods introduced below are one example of such algorithms.

A large part of our research activity is dedicated to numerical methods applied to the first type of inverse problems, where only the geometrical information is sought. In its general setting the inverse problem is very challenging and no method can provide a universal satisfactory solution to it (regarding the balance cost-precision-stability). This is why in the majority of the practically employed algorithms, some simplification of the underlying mathematical model is used, according to the specific configuration of the imaging experiment. The most popular ones are geometric optics (the Kirchhoff approximation) for high frequencies and weak scattering (the Born approximation) for small contrasts or small obstacles. They actually give full satisfaction for a wide range of applications as attested by the large success of existing imaging devices (radar, sonar, ultrasound, X-ray tomography, etc.), that rely on one of these approximations.

Generally speaking, the used simplifications result in a linearization of the inverse problem and therefore are usually valid only if the latter is weakly non-linear. The development of these simplified models and the improvement of their efficiency is still a very active research area. With that perspective we are particularly interested in deriving and studying higher order asymptotic models associated with small geometrical parameters such as: small obstacles, thin coatings, wires, periodic media, Higher order models usually introduce some non linearity in the inverse problem, but are in principle easier to handle from the numerical point of view than in the case of the exact model.

A larger part of our research activity is dedicated to algorithms that avoid the use of such approximations and that are efficient where classical approaches fail: i.e. roughly speaking when the non linearity of the inverse problem is sufficiently strong. This type of configuration is motivated by the applications mentioned below, and occurs as soon as the geometry of the unknown media generates non negligible multiple scattering effects (multiply-connected and closely spaces obstacles) or when the used frequency is in the so-called resonant region (wave-length comparable to the size of the sought medium). It is therefore much more difficult to deal with and requires new approaches. Our ideas to tackle this problem will be motivated and inspired by recent advances in shape and topological optimization methods and also the introduction of novel classes of imaging algorithms, so-called sampling methods.

The sampling methods are fast imaging solvers adapted to multi-static data (multiple receiver-transmitter pairs) at a fixed frequency. Even if they do not use any linearization the forward model, they rely on computing the

solutions to a set of linear problems of small size, that can be performed in a completely parallel procedure. Our team has already a solid expertise in these methods applied to electromagnetic 3-D problems. The success of such approaches was their ability to provide a relatively quick algorithm for solving 3-D problems without any need for a priori knowledge on the physical parameters of the targets. These algorithms solve only the imaging problem, in the sense that only the geometrical information is provided.

Despite the large efforts already spent in the development of this type of methods, either from the algorithmic point of view or the theoretical one, numerous questions are still open. These attractive new algorithms also suffer from the lack of experimental validations, due to their relatively recent introduction. We also would like to invest on this side by developing collaborations with engineering research groups that have experimental facilities. From the practical point of view, the most potential limitation of sampling methods would be the need of a large amount of data to achieve a reasonable accuracy. On the other hand, optimization methods do not suffer from this constrain but they require good initial guess to ensure convergence and reduce the number of iterations. Therefore it seems natural to try to combine the two class of methods in order to calibrate the balance between cost and precision.

Among various shape optimization methods, the Level Set method seems to be particularly suited for such a coupling. First, because it shares similar mechanism as sampling methods: the geometry is captured as a level set of an “indicator function” computed on a cartesian grid. Second, because the two methods do not require any a priori knowledge on the topology of the sought geometry. Beyond the choice of a particular method, the main question would be to define in which way the coupling can be achieved. Obvious strategies consist in using one method to pre-process (initialization) or post-process (find the level set) the other. But one can also think of more elaborate ones, where for instance a sampling method can be used to optimize the choice of the incident wave at each iteration step. The latter point is closely related to the design of so called “focusing incident waves” (which are for instance the basis of applications of the time-reversal principle). In the frequency regime, these incident waves can be constructed from the eigenvalue decomposition of the data operator used by sampling methods. The theoretical and numerical investigations of these aspects are still not completely understood for electromagnetic or elastodynamic problems.

Other topological optimization methods, like the homogenization method or the topological gradient method, can also be used, each one provides particular advantages in specific configurations. It is evident that the development of these methods is very suited to inverse problems and provide substantial advantage compared to classical shape optimization methods based on boundary variation. Their applications to inverse problems has not been fully investigated. The efficiency of these optimization methods can also be increased for adequate asymptotic configurations. For instance small amplitude homogenization method can be used as an efficient relaxation method for the inverse problem in the presence of small contrasts. On the other hand, the topological gradient method has shown to perform well in localizing small inclusions with only one iteration.

A broader perspective would be the extension of the above mentioned techniques to time-dependent cases. Taking into account data in time domain is important for many practical applications, such as imaging in cluttered media, the design of absorbing coatings or also crash worthiness in the case of structural design.

For the identification problem, one would like to also have information on the physical properties of the targets. Of course optimization methods is a tool of choice for these problems. However, in some applications only a qualitative information is needed and obtaining it in a cheaper way can be performed using asymptotic theories combined with sampling methods. We also refer here to the use of so called transmission eigenvalues as qualitative indicators for non destructive testing of dielectrics.

We are also interested in parameter identification problems arising in diffusion-type problems. Our research here is mostly motivated by applications to the imaging of biological tissues with the technique of Diffusion Magnetic Resonance Imaging (DMRI). Roughly speaking DMRI gives a measure of the average distance travelled by water molecules in a certain medium and can give useful information on cellular structure and structural change when the medium is biological tissue. In particular, we would like to infer from DMRI measurements changes in the cellular volume fraction occurring upon various physiological or pathological conditions as well as the average cell size in the case of tumor imaging. The main challenges here are 1) correctly model measured signals using diffusive-type time-dependent PDEs 2) numerically handle the

complexity of the tissues 3) use the first two to identify physically relevant parameters from measurements. For the last point we are particularly interested in constructing reduced models of the multiple-compartment Bloch-Torrey partial differential equation using homogenization methods.

4. Application Domains

4.1. Radar and GPR applications

Conventional radar imaging techniques (ISAR, GPR, etc.) use backscattering data to image targets. The commonly used inversion algorithms are mainly based on the use of weak scattering approximations such as the Born or Kirchhoff approximation leading to very simple linear models, but at the expense of ignoring multiple scattering and polarization effects. The success of such an approach is evident in the wide use of synthetic aperture radar techniques.

However, the use of backscattering data makes 3-D imaging a very challenging problem (it is not even well understood theoretically) and as pointed out by Brett Borden in the context of airborne radar: “In recent years it has become quite apparent that the problems associated with radar target identification efforts will not vanish with the development of more sensitive radar receivers or increased signal-to-noise levels. In addition it has (slowly) been realized that greater amounts of data - or even additional “kinds” of radar data, such as added polarization or greatly extended bandwidth - will all suffer from the same basic limitations affiliated with incorrect model assumptions. Moreover, in the face of these problems it is important to ask how (and if) the complications associated with radar based automatic target recognition can be surmounted.” This comment also applies to the more complex GPR problem.

Our research themes will incorporate the development, analysis and testing of several novel methods, such as sampling methods, level set methods or topological gradient methods, for ground penetrating radar application (imaging of urban infrastructures, landmines detection, underground waste deposits monitoring, ...) using multistatic data.

4.2. Biomedical imaging

Among emerging medical imaging techniques we are particularly interested in those using low to moderate frequency regimes. These include Microwave Tomography, Electrical Impedance Tomography and also the closely related Optical Tomography technique. They all have the advantage of being potentially safe and relatively cheap modalities and can also be used in complementarity with well established techniques such as X-ray computed tomography or Magnetic Resonance Imaging.

With these modalities tissues are differentiated and, consequentially can be imaged, based on differences in dielectric properties (some recent studies have proved that dielectric properties of biological tissues can be a strong indicator of the tissues functional and pathological conditions, for instance, tissue blood content, ischemia, infarction, hypoxia, malignancies, edema and others). The main challenge for these functionalities is to build a 3-D imaging algorithm capable of treating multi-static measurements to provide real-time images with highest (reasonably) expected resolutions and in a sufficiently robust way.

Another important biomedical application is brain imaging. We are for instance interested in the use of EEG and MEG techniques as complementary tools to MRI. They are applied for instance to localize epileptic centers or active zones (functional imaging). Here the problem is different and consists into performing passive imaging: the epileptic centers act as electrical sources and imaging is performed from measurements of induced currents. Incorporating the structure of the skull is primordial in improving the resolution of the imaging procedure. Doing this in a reasonably quick manner is still an active research area, and the use of asymptotic models would offer a promising solution to fix this issue.

4.3. Non destructive testing and parameter identification

One challenging problem in this vast area is the identification and imaging of defaults in anisotropic media. For instance this problem is of great importance in aeronautic constructions due to the growing use of composite materials. It also arises in applications linked with the evaluation of wood quality, like locating knots in timber in order to optimize timber-cutting in sawmills, or evaluating wood integrity before cutting trees. The anisotropy of the propagative media renders the analysis of diffracted waves more complex since one cannot only relies on the use of backscattered waves. Another difficulty comes from the fact that the micro-structure of the media is generally not well known a priori.

Our concern will be focused on the determination of qualitative information on the size of defaults and their physical properties rather than a complete imaging which for anisotropic media is in general impossible. For instance, in the case of homogeneous background, one can link the size of the inclusion and the index of refraction to the first eigenvalue of so-called interior transmission problem. These eigenvalues can be determined from the measured data and a rough localization of the default. Our goal is to extend this kind of idea to the cases where both the propagative media and the inclusion are anisotropic. The generalization to the case of cracks or screens has also to be investigated.

In the context of nuclear waste management many studies are conducted on the possibility of storing waste in a deep geological clay layer. To assess the reliability of such a storage without leakage it is necessary to have a precise knowledge of the porous media parameters (porosity, tortuosity, permeability, etc.). The large range of space and time scales involved in this process requires a high degree of precision as well as tight bounds on the uncertainties. Many physical experiments are conducted *in situ* which are designed for providing data for parameters identification. For example, the determination of the damaged zone (caused by excavation) around the repository area is of paramount importance since microcracks yield drastic changes in the permeability. Level set methods are a tool of choice for characterizing this damaged zone.

4.4. Diffusion MRI

In biological tissues, water is abundant and magnetic resonance imaging (MRI) exploits the magnetic property of the nucleus of the water proton. The imaging contrast (the variations in the grayscale in an image) in standard MRI can be from either proton density, T1 (spin-lattice) relaxation, or T2 (spin-spin) relaxation and the contrast in the image gives some information on the physiological properties of the biological tissue at different physical locations of the sample. The resolution of MRI is on the order of millimeters: the grayscale value shown in the imaging pixel represents the volume-averaged value taken over all the physical locations contained that pixel.

In diffusion MRI, the image contrast comes from a measure of the average distance the water molecules have moved (diffused) during a certain amount of time. The Pulsed Gradient Spin Echo (PGSE) sequence is a commonly used sequence of applied magnetic fields to encode the diffusion of water protons. The term 'pulsed' means that the magnetic fields are short in duration, and the term gradient means that the magnetic fields vary linearly in space along a particular direction. First, the water protons in tissue are labelled with nuclear spin at a precession frequency that varies as a function of the physical positions of the water molecules via the application of a pulsed (short in duration, lasting on the order of ten milliseconds) magnetic field. Because the precessing frequencies of the water molecules vary, the signal, which measures the aggregate phase of the water molecules, will be reduced due to phase cancellations. Some time (usually tens of milliseconds) after the first pulsed magnetic field, another pulsed magnetic field is applied to reverse the spins of the water molecules. The time between the applications of two pulsed magnetic fields is called the 'diffusion time'. If the water molecules have not moved during the diffusion time, the phase dispersion will be reversed, hence the signal loss will also be reversed, the signal is called refocused. However, if the molecules have moved during the diffusion time, the refocusing will be incomplete and the signal detected by the MRI scanner is weaker than if the water molecules have not moved. This lack of complete refocusing is called the signal attenuation and is the basis of the image contrast in DMRI. The pixels showing more signal attenuation is associated with further water displacement during the diffusion time, which may be linked to physiological factors, such as higher cell membrane permeability, larger cell sizes, higher extra-cellular volume fraction.

We model the nuclear magnetization of water protons in a sample due to diffusion-encoding magnetic fields by a multiple compartment Bloch-Torrey partial differential equation, which is a diffusive-type time-dependent PDE. The DMRI signal is the integral of the solution of the Bloch-Torrey PDE. In a homogeneous medium, the intrinsic diffusion coefficient D will appear as the slope of the semi-log plot of the signal (in appropriate units). However, because during typical scanning times, $50 - 100ms$, water molecules have had time to travel a diffusion distance which is long compared to the average size of the cells, the slope of the semi-log plot of the signal is in fact a measure of an 'effective' diffusion coefficient. In DMRI applications, this measured quantity is called the 'apparent diffusion coefficient' (ADC) and provides the most commonly used form the image contrast for DMRI. This ADC is closely related to the effective diffusion coefficient obtainable from mathematical homogenization theory.

5. Software and Platforms

5.1. RODIN

Participant: Grégoire Allaire [correspondant].

In the framework of the RODIN project we continue to develop with our software partner ESI the codes Topolev and Geolev for topology and geometry shape optimization of mechanical structures using the level set method.

5.2. FreeFem++ Toolboxes

5.2.1. Shape optimization toolbox in FreeFem++

Participants: Grégoire Allaire, Olivier Pantz.

We propose several FreeFem++ routines which allow the users to optimize the thickness, the geometry or the topology of elastic structures. All examples are programmed in two space dimensions. These routines have been written by G. Allaire, B. Boutin, C. Dousset, O. Pantz. A web page of this toolbox is available at http://www.cmap.polytechnique.fr/~allaire/freefem_en.html.

We also have written a C++ code to solve the Hamilton Jacoby equation used in the Level-set shape optimization method. This code has been linked with FreeFem++ routines.

5.2.2. Eddy current problems

Participants: Zixian Jiang, Kamel Riahi.

We developed a FreeFem++ toolbox that solves direct and inverse problems for an axisymmetric and 3D eddy current problems related to non destructive testing of deposits on the shell side of PWR fuel tubes. For the 3-D version, one can refer to <http://www.cmap.polytechnique.fr/~riahi>

5.2.3. Contact managements

Participant: Olivier Pantz.

We have developed a toolbox running under Freefem++ in order to take into account the non-intersection constraints between several deformable bodies. This code has been used to treat contacts between red blood cells in our simulations, but also between genuine non linear elastic structure. It can handle both contacts and self-contacts.

Moreover, a toolbox based on the Penalization method has also been developed.

5.2.4. De-Homogenization

Participant: Olivier Pantz.

We have developed a code under Freefem++ that implements our De-Homogenization method. It has been used to solve the compliance minimization problem of the compliance of an elastic shape. In particular, it enables us to recover well known optimal Michell's trusses for shapes of low density.

5.3. Scilab and Matlab Toolboxes

5.3.1. Shape optimization toolbox in Scilab

Participant: Grégoire Allaire [correspondant].

Together with Georgios Michailidis, we improved a Scilab toolbox for 2-d shape and topology optimization by the level set method which was originally produced by Anton Karrman and myself. The routines, a short user's manual and several examples are available on the web page: http://www.cmap.polytechnique.fr/~allaire/levelset_en.html

5.3.2. Conformal mapping method

Participant: Housseem Haddar [correspondant].

This Scilab toolbox is dedicated to the resolution of inverse 2-D electrostatic problems using the conformal mapping method introduced by Akdumann, Kress and Haddar. The toolbox treats the cases of a simply connected obstacle with Dirichlet, Neumann or impedance boundary conditions or a simply connected inclusion with a constant conductivity. The latest development includes the extension of the method to the inverse scattering problem at low frequencies as introduced by Haddar-Kress (2012).

5.4. Sampling methods for inverse problems

5.4.1. Samplings-2d

Participant: Housseem Haddar [correspondant].

This software is written in Fortran 90 and is related to forward and inverse problems for the Helmholtz equation in 2-D. It includes three independent components. The first one solves to scattering problem using integral equation approach and supports piecewise-constant dielectrics and obstacles with impedance boundary conditions. The second one contains various samplings methods to solve the inverse scattering problem (LSM, RGLSM(s), Factorization, MuSiC) for near-field or far-field setting. The third component is a set of post processing functionalities to visualize the results

See also the web page <http://sourceforge.net/projects/samplings-2d/>.

- License: GPL
- Type of human computer interaction: sourceforge
- OS/Middleware: Linux
- Programming language: Fortran
- Documentation: fichier

5.4.2. Samplings-3d

Participant: Housseem Haddar [correspondant].

This software is written in Fortran 90 and is related to forward and inverse problems for the Helmholtz equation in 3-D. It contains equivalent functionalities to samplings-2d in a 3-D setting.

5.4.3. Time domain samplings-2d

Participant: Housseem Haddar [correspondant].

This software is written in Fortran 90 and is related to forward and inverse problems for the time dependent wave equation in 2-D. The forward solver is based on a FDTD method with PMLs. The inverse part is an implementation of the linear sampling method in a near field setting and the factorization method in a far field setting.

5.4.4. Factorization Method for EIT

Participant: Giovanni Migliorati.

We developed a numerical code that implements the Factorization Method applied to the Continuous Model, in the framework of Electrical Impedance Tomography featuring an inhomogeneous background. The numerical scheme relies on the approximation by the finite element method of the solution to the dipole-like Neumann boundary-value problem. Two regularization techniques are implemented, i.e. the Tikhonov regularization embedding Morozov principle, and the classical Picard Criterion. The code now supports the case of piecewise-wise constant by unknown background.

5.5. BlochTorreyPDESolver

Participants: Jing-Rebecca Li [correspondant], Dang Van Nguyen.

We developed two numerical codes to solve the multiple-compartments Bloch-Torrey partial differential equation in 2D and 3D to simulate the water proton magnetization of a sample under the influence of diffusion-encoding magnetic field gradient pulses.

We coupled the spatial discretization with an efficient time discretization adapted to diffusive problems called the (explicit) Runge-Kutta-Chebyshev method.

The version of the code using Finite Volume discretization on a Cartesian grid is complete (written by Jing-Rebecca Li). The version of the code using linear Finite Elements discretization is complete (written by Dang Van Nguyen and Jing-Rebecca Li).

See the web page <http://www.cmap.polytechnique.fr/~jingrebecali/> for more details.

6. New Results

6.1. Qualitative methods for inverse scattering problems

6.1.1. A generalized formulation of the Linear Sampling Method

Participants: Lorenzo Audibert, Housseem Haddar.

We proposed and analyzed a new formulation of the Linear Sampling Method that uses an exact characterization of the targets shape in terms of the so-called farfield operator (at a fixed frequency). This characterization is based on constructing nearby solutions of the farfield equation using minimizing sequences of a least squares cost functional with an appropriate penalty term. We first provided a general framework for the theoretical foundation of the method in the case of noise-free and noisy measurements operator. We then explicated applications for the case of inhomogeneous inclusions and indicate possible straightforward generalizations. We finally validated the method through some numerical tests and compare the performances with classical LSM and the factorization methods.

6.1.2. Inverse problems for periodic penetrable media

Participant: Dinh Liem Nguyen.

Imaging periodic penetrable scattering objects is of interest for non-destructive testing of photonic devices. The problem is motivated by the decreasing size of periodic structures in photonic devices, together with an increasing demand in fast non-destructive testing. In this project, we considered the problem of imaging a periodic penetrable structure from measurements of scattered electromagnetic waves. As a continuation of earlier work jointly with A. Lechleiter we considered an electromagnetic problem for transverse magnetic waves (previous work treats transverse electric fields), and also the full Maxwell equations. In both cases, we treat the direct problem by a volumetric integral equation approach and construct a Factorization method.

6.1.3. *Transmission Eigenvalues and their application to the identification problem*

Participant: Housseem Haddar.

The so-called interior transmission problem plays an important role in the study of inverse scattering problems from (anisotropic) inhomogeneities. Solutions to this problem associated with singular sources can be used for instance to establish uniqueness for the imaging of anisotropic inclusions from multi-static data at a fixed frequency. It is also well known that the injectivity of the far field operator used in sampling methods is related to the uniqueness of solutions to this problem. The frequencies for which this uniqueness fails are called transmission eigenvalues. We are currently developing approaches where these frequencies can be used in identifying (qualitative information on) the medium properties. Our research on this topic is mainly done in the framework of the associate team ISIP <http://www.cmap.polytechnique.fr/~defi/ISIP/isip.html> with the University of Delaware. A review article on the state of art concerning the transmission eigenvalue problem has been written in collaboration with F. Cakoni. We also edited a special issue of the journal *Inverse Problems* dedicated to the use of these transmission eigenvalues in inverse problems <http://iopscience.iop.org/0266-5611/29/10/100201/>. Our recent contributions are the following:

- Together with A. Cossonnière we analyzed the Fredholm properties of the interior transmission problem for the cases where the index contrast changes sign outside the boundary by using a surface integral equation approach.
- With F. Cakoni and N. Chaulet we investigated the asymptotic behaviour of the first transmission eigenvalue of a thin coating with respect to the coating thickness.

6.1.4. *The factorization method for inverse scattering problems*

6.1.4.1. *The factorization method for cracks with impedance boundary conditions*

Participant: Housseem Haddar.

With Y. Boukari we used the Factorization method to retrieve the shape of cracks with impedance boundary conditions from farfields associated with incident plane waves at a fixed frequency. This work is an extension of the study initiated by Kirsch and Ritter [*Inverse Problems*, 16, pp. 89-105, 2000] where the case of sound soft cracks is considered. We address here the scalar problem and provide theoretical validation of the method when the impedance boundary conditions hold on both sides of the crack. We then deduce an inversion algorithm and present some validating numerical results in the case of simply and multiply connected cracks [5].

6.1.4.2. *The factorization method for EIT with uncertain background*

Participants: Giovanni Migliorati, Housseem Haddar.

We extended the Factorization Method for Electrical Impedance Tomography to the case of background featuring uncertainty. This work is based on our earlier algorithm for known but inhomogeneous backgrounds. We developed three methodologies to apply the Factorization Method to the more difficult case of piecewise constant but uncertain background. The first one is based on a recovery of the background through an optimization scheme and is well adapted to relatively low dimensional random variables describing the background. The second one is based on a weighted combination of the indicator functions provided by the Factorization Method for different realizations of the random variables describing the uncertain background. We show through numerical experiments that this procedure is well suited to the case where many realizations of the measurement operators are available. The third strategy is a variant of the previous one when measurements for the inclusion-free background are available. In that case, a single pair of measurements is sufficient to achieve comparable accuracy to the deterministic case [15].

6.1.4.3. *The factorization method for GIBC*

Participants: Mathieu Chamillard, Housseem Haddar.

With N. Chaulet, we studied the identification of some obstacle and some Generalized Impedance Boundary Conditions (GIBC) on the boundary of such obstacle from far field measurements generated by the scattering of harmonic incident waves. The GIBCs are approximate models for thin coatings, corrugated surfaces, rough surfaces or imperfectly conducting media.

We justified the use of the Factorization method to solve the inverse obstacle problem in the presence of GIBCs. This method gives a uniqueness proof as well as a fast algorithm to reconstruct the obstacle from the knowledge of the far field produced by incident plane waves for all the directions of incidence at a given frequency. We also provided some numerical reconstructions of obstacles for several impedance operators.

6.2. Iterative Methods for Non-linear Inverse Problems

6.2.1. Inverse medium problem for axisymmetric eddy current models

Participants: Housseem Haddar, Zixian Jiang, Kamel Riahi.

We continued our developments of shape optimization methods for inclusion detection in an axisymmetric eddy current model. This problem is motivated by non-destructive testing methodologies for steam generators. We finalized a joint work with A. Lechleiter on numerical methods for the solution of the direct problem in weighted Sobolev spaces using appropriate Dirichlet-to-Neumann mappings to bound the computational domain. We are also finalized jointly with M. El Guedri the work on inverse solver using a regularized steepest descent method for the problem of identifying a magnetite deposits using axial eddy current probe. We then addressed two new issues:

- We developed asymptotic models to identify thin highly conducting deposits. We derived three possible asymptotic models that can be exploited in the inverse problem. The numerical validation is under study.
- We extended the inverse scheme to 3D configurations with axisymmetry at infinity: this includes exact characterization of the shape derivative for a mixed formulation of eddy current problems and a parametric inversion scheme based on a pre-defined discrete grid for deposit location.

6.2.2. The conformal mapping method and inverse scattering at low frequencies

Participant: Housseem Haddar.

Together with R. Kress we employed a conformal mapping technique for the inverse problem to reconstruct a perfectly conducting inclusion in a homogeneous background medium from Cauchy data for electrostatic imaging, that is, for solving an inverse boundary value problem for the Laplace equation. In a recent work [13] we proposed an extension of this approach to inverse obstacle scattering for time-harmonic waves, that is, to the solution of an inverse boundary value problem for the Helmholtz equation. The main idea is to use the conformal mapping algorithm in an iterative procedure to obtain Cauchy data for a Laplace problem from the given Cauchy data for the Helmholtz problem. We presented the foundations of the method together with a convergence result and exhibit the feasibility of the method via numerical examples.

6.2.3. A steepest descent method for inverse electromagnetic scattering problems

Participant: Housseem Haddar.

Together with N. Chaulet, we proposed the application of a non linear optimization techniques to solve the inverse scattering problems for the 3D Maxwell's equations with generalized impedance boundary conditions. We characterized the shape derivative in the case where the GIBC is defined by a second order surface operator. We then applied a boundary variation method based on a regularized steepest descent to solve the 3-D inverse problem with partial farfield data. The obtained numerical results demonstrated the possibility of identifying the shape of coated objects as well as the parameters of the coating in the 3D Maxwell case.

6.3. Shape and topology optimization

6.3.1. Geometric shape optimization

Participant: Grégoire Allaire.

With Ch. Dapogny and P. Frey, we propose a new approach for geometry and topology optimization of structures which benefits from an accurate description of shapes at each stage of the iterative process (by means of a mesh amenable for mechanical analyses) while retaining the whole versatility of the level set method when it comes to accounting for their evolution. The key ingredients of this method are two operators for switching from a meshed representation of a domain to an implicit one, and conversely; this notably brings into play an algorithm for generating the signed distance function to an arbitrary discrete domain, and a mesh generation algorithm for implicitly-defined geometries.

6.3.2. Worst-case design shape optimization

Participant: Grégoire Allaire.

with Ch. Dapogny, we propose a deterministic method for optimizing a structure with respect to its worst possible behavior when a "small" uncertainty exists over some of its features. The main idea is to linearize the considered cost function with respect to the uncertain parameters, then to consider the supremum function of the obtained linear approximation, which can be rewritten as a more classical function of the design, owing to standard adjoint techniques from optimal control theory. The resulting linearized worst-case objective function turns out to be the sum of the initial cost function and of a norm of an adjoint state function, which is dual with respect to the considered norm over perturbations.

6.3.3. Multi-phase structural optimization

Participant: Grégoire Allaire.

With Ch. Dapogny, G. Delgado and G. Michailidis, we consider the optimal distribution of several elastic materials in a fixed working domain. In order to optimize both the geometry and topology of the mixture we rely on the level set method for the description of the interfaces between the different phases. We discuss various approaches, based on Hadamard method of boundary variations, for computing shape derivatives which are the key ingredients for a steepest descent algorithm. The shape gradient obtained for a sharp interface involves jump of discontinuous quantities at the interface which are difficult to numerically evaluate. Therefore we suggest an alternative smoothed interface approach which yields more convenient shape derivatives. We rely on the signed distance function and we enforce a fixed width of the transition layer around the interface (a crucial property in order to avoid increasing "grey" regions of fictitious materials). It turns out that the optimization of a diffuse interface has its own interest in material science, for example to optimize functionally graded materials.

6.3.4. Level-Set Method

Participant: Olivier Pantz.

We have begun to work, with Gabriel Delgado, on a new level-set optimization method, based on a gradient method. The key idea consists in computing directly the derivative of the discretized cost functions. The main advantage is that it is usually more simple to implement than the standard approach (consisting in using a discretized version of the gradient of the cost function). Moreover, the results obtained are as good or even better than the one obtained in previous works. Nevertheless, this method has its drawbacks, since the cost function is only derivable almost everywhere (the zero level-set has to be transverse to the triangulation of the mesh). It follows that convergence toward the minimum by the gradient method is not granted. To overcome this problem, we intend to use a mix-formulation for the state function. Unfortunately, such a formulation, in the case of linear elasticity is quite difficult to obtain. We thus intend to begin with the simplest scalar case, for which a lot more hybrid formulations are available.

6.3.5. Optimization of a sodium fast reactor core

Participants: Grégoire Allaire, Olivier Pantz.

In collaboration with D. Schmidt, G. Allaire and E. Dombre, we apply the geometrical shape optimization method for the design of a SFR (Sodium Fast reactor) core in order to minimize a thermal counter-reaction known as the sodium void effect. In this kind of reactor, by increasing the temperature, the core may become liable to a strong increase of reactivity ρ , a key-parameter governing the chain-reaction at quasi-static states. We first use the 1 group energy diffusion model and give the generalization to the 2 groups energy equation. We then give some numerical results in the case of the 1 group energy equation. Note that the application of our method leads to some designs whose interfaces can be parametrized by very smooth curves which can stand very far from realistic designs. We don't explain here the method that it would be possible to use for recovering an operational design but there exists several penalization methods that could be employed to this end. This work was partially sponsored by EDF. Our results will be published in the proceedings of the CEMRACS'11, during which part of the results have been obtained.

6.4. Asymptotic Analysis

6.4.1. *Effective boundary conditions for thin periodic coatings*

Participants: Mathieu Chamillard, Houssein Haddar.

This topic is the object of a collaboration with Patrick Joly and is a continuation of our earlier work on interface conditions done in the framework of the PhD thesis of Berangère Delourme. The goal here is to derive effective conditions that model scattering from thin periodic coatings where the thickness and the periodicity are of the same length but very small compared to the wavelength. The originality of our work, compared to abundant literature is to consider the case of arbitrary geometry (2-D or 3-D) and to consider higher order approximate models. We formally derived third order effective conditions after exhibiting the full asymptotic expansion of the solution in terms of the periodicity length.

6.4.2. *Homogenization of electrokinetic models in porous media*

Participant: Grégoire Allaire.

With R. Brizzi, J.-F. Dufrière, A. Mikelić and A. Piatnitski, we are interested in the homogenization (or upscaling) of a system of partial differential equations describing the non-ideal transport of a N-component electrolyte in a dilute Newtonian solvent through a rigid porous medium. Our work can be divided in two different contributions. First, in the case of an ideal model (for which the homogenized system was already known) we consider the various limits which can be obtained in the effective parameters when the ratio between the characteristic pore length and the Debye length is either small or large. Second, we studied the homogenization process in the non-ideal case, namely when considering the so-called mean spherical approximation (MSA) model which takes into account finite size ions and screening effects.

6.4.3. *A new shell modeling modeling*

Participant: Olivier Pantz.

Using a formal asymptotic expansion, we have proved with K. Trabelsi, that non-isotropic thin-structure could behave (when the thickness is small) like a shell combining both membrane and bending effects. It is the first time to our knowledge that such a model is derived. An article on this is currently under review.

6.4.4. *A new Liouville type Rigidity Theorem*

Participant: Olivier Pantz.

We have recently developed a new Liouville type Rigidity Theorem. Considering a cylindrical shaped solid, we prove that if the local area of the cross sections is preserved together with the length of the fibers, then the deformation is a combination of a planar deformation and a rigid motion. The results currently obtained are limited to regular deformations and we are currently working with B. Merlet to extend them. Nevertheless, we mainly focus on the case where the conditions imposed to the local area of the cross sections and the length of the fibers are only "almost" fulfilled. This will enable us to derive rigorously new non linear shell models combining both membrane and flexural effects that we have obtained using a formal approach.

6.5. Diffusion MRI

Participants: Jing-Rebecca Li, Housseem Haddar, Dang Van Nguyen, Hang Tuan Nguyen.

Diffusion Magnetic Resonance Imaging (DMRI) is a promising tool to obtain useful information on microscopic structure and has been extensively applied to biological tissues. In particular, we would like to focus on two applications:

- inferring from DMRI measurements changes in the cellular volume fraction occurring upon various physiological or pathological conditions.

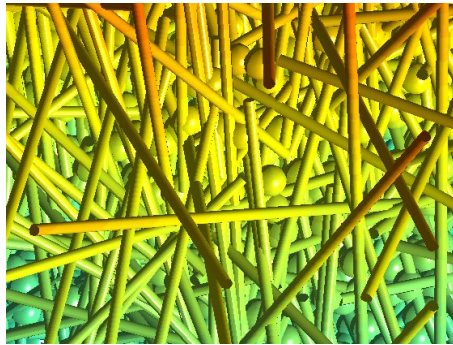


Figure 1. Computational domain for simulating diffusion in cerebral gray matter.

This application is one of the first to show the promise of DMRI because it can detect acute cerebral ischemia (cell swelling) on the basis of lower than normal apparent diffusion coefficient a few minutes after stroke.

- estimating the average cell size in the case of tumor imaging

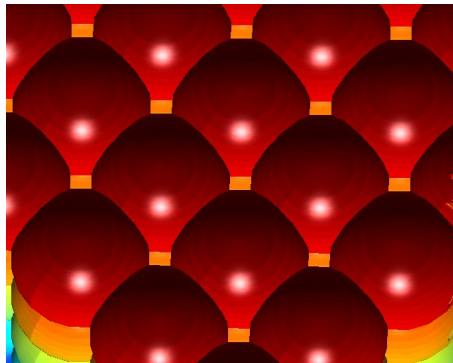


Figure 2. Computational domain for simulating tumor cells.

This application is useful as a diagnostic tool as well as a tool for the evaluation of tumor treatments.

For both of the above applications we approach the problem via the following steps:

- Construct reduced models of the multiple-compartment Bloch-Torrey partial differential equation (PDE) using homogenization methods.
- Invert the resulting reduced models for the biological parameters of interest: the cellular volume fraction in the first case, and the average distance between neighboring cells in the second case.

We obtained the following results.

- We generated fairly complicated meshes that can be used to simulate diffusion in cerebral gray matter. In the Finite Elements code, this required using the mesh generation software Salome, developed at the CEA Saclay. We are working on the problem of increasing the cellular volume fraction to a physically realistic level, which is difficult for the mesh generator because of the very small distances between the neurons. An article describing the Finite Elements code has been accepted by the Journal of Computational Physics, to be published in 2014. An article on a version of the code using Finite Volume discretization has been accepted by Physics in Medicine and Biology, published in 2013.
- We developed a reduce model of the DMRI signal using homogenization methods. Two articles on this topic have been submitted.

7. Bilateral Contracts and Grants with Industry

7.1. Bilateral Contracts with Industry

- Contract with IFPEN on multiscale finite elements for two-phase flows in porous media (in the framework of the PhD thesis of F. Ouaki, defended in 2013).
- Contract with EADS/IW on topology optimization for composite panels drapping (in the framework of the PhD thesis of G. Delgado, defended in 2013).
- Contract with Renault on geometry and topology optimization of structures (in the framework of the two PhD theses of Ch. Dapogny, with the co-advising of P. Frey, to be defended in 2013, and G. Michailidis, with the co-advising of F. Jouve, to be defended in 2014).
- Contract with EDF R&D on non destructive testing of concrete materials (in the framework of the PhD thesis of Lorenzo Audibert, to be defended in 2015)
- Housseem Haddar has a contract with EDF R&D on data assimilation for temprature estimates in nuclear reactors (in the framework of the PhD thesis of Thibault Mercier, to be defended in 2015)
- Housseem Haddar is coordinating the contract EDF R&D on non eddy current non destructive testing. This contract involves Zixian Jiang and a two years PostDoc, Kamel Riahi.

7.2. Bilateral Grants with Industry

7.2.1. FUI Projects

- Gregoire Allaire is in charge of the RODIN project. RODIN is the acronym of "Robust structural Optimization for Design in INdustry". This is a consortium of various companies and universities which has been sponsored by the FUI AAP 13 for 3 years, starting on July 2012. The industrial partners are: Renault, EADS, ESI, Eurodecision, Alneos, DPS. The academic partners are: CMAP at Ecole Polytechnique, Laboratoire J.-L. Lions at Paris 6 and 7 Universities, centre de recherches Bordeaux Sud-Ouest at Inria. The goal of the RODIN project is to perform research and develop a computer code on geometry and topology optimization of solid structures, based on the level set method.
- Housseem Haddar is in charge of DEFI part of the FUI project Nanolytix. This three years project started in October 2012 and involves Xenocs (coordinator), imXPAD, Arkema, Inria (DEFI) and CEA-Leti. It aims at building a compact and easy-to use device that images nonaparticles using X-ray diffraction at small or wide angles (SAXS and WAXS technologies). We are in charge of direct and inverse simulation of the SAXS and WAXS experiments.

- Housseem Haddar is in charge of the electromagnetic simulation work package of the FUI project Tandem. This three years project started in December 2012 and involves Bull-Amesys (coordinator), BOWEN (ERTE+SART), Ecole Polytechnique (CMAP), Inria, LEAT et VSM. It aims at constructing a radar system on a flying device capable of real-time imaging mines embedded in dry soils (up to 40 cm deep). We are in charge of numerical validation of the inverse simulator.

8. Partnerships and Cooperations

8.1. National Initiatives

8.1.1. ANR

- J.R. Li is the coordinator of the project Simulation du signal d'IRM diffusion dans des tissus biologiques (SIMUDMRI), funded 2010-2013 by the ANR Program COSINUS. Participants : Jing-Rebecca Li, Housseem Haddar, Dang Van Nguyen. Joint proposal between Inria-Saclay and CEA Neurospin. <http://www.cmap.polytechnique.fr/~jingrebeccali/grants/simudmri.html>
- H. Haddar is the DEFI coordinator of the ANR: Modelization and numerical simulation of wave propagation in metamaterials (METAMATH), program MN, 2011-2015. This is a joint ANR with POEMS, Inria Saclay Ile de France project team (Coordinator, S. Fliss), DMIA, Département de Mathématiques de l'ISAE and IMATH, Laboratoire de Mathématiques de l'Université de Toulon. <https://www.rocq.inria.fr/poems/metamath>
- J.R. Li is the coordinator of the Inria partner of the project "Computational Imaging of the Aging Cerebral Microvasculature", funded by ANR Program "US-French Collaboration". French Partners (Coordinating partner CEA Neurospin): CEA Neurospin (Coordinator Luisa Ciobanu), Inria Saclay (Coordinator Jing-Rebecca Li). US Partner: Univ of Illinois, bioengineering department (Coordinator Brad Sutton). Duration: Sept 2013- Sept 2016.

8.2. European Initiatives

8.2.1. Collaborations with Major European Organizations

Partner 1: University of Bremen, Department of Math. (Germany)

Joint PhD advising of T. Rienmuller, partly funded by French-German university. Correspondant: Armin Lechleiter.

Partner 2: University of Goettingen, Department of Math. (Germany)

Development of conformal mapping method to electrostatic inverse problems. Correspondant: Rainer Kress.

Partner 3: University of Genova, Department of Math. (Italy)

Development of qualitative methods in inverse scattering problems. Correspondant: Michele Piana.

8.3. International Initiatives

8.3.1. Inria Associate Teams

8.3.1.1. ISIP

Title: Inverse Scattering and Identification Problems

Inria principal investigator: Housseem HADDAR

International Partner (Institution - Laboratory - Researcher):

University of Delaware (United States) - Mathematical Department - Housseem HADDAR

Duration: 2008 - 2013

See also: <http://www.cmap.polytechnique.fr/~defi/ISIP/isip.html>

8.3.2. Inria International Partners

8.3.2.1. Declared Inria International Partners

- Mathematical department of the University of Delaware

8.3.3. Participation In other International Programs

- H. Haddar is member of the EPIC, an Inria team in the framework of LIRIMA.
- Olivier Pantz is in charge of the french side of the PHC (Hubert Curien Project) *Sur l'étude de quelques problèmes d'équations aux dérivées partielles issus de la physique* (with H. Zorgati of the University of Tunis in charge for the Tunisian side).

8.4. International Research Visitors

8.4.1. Visits of International Scientists

8.4.1.1. Sabbatical

- Yassine Boubendir, Department of Mathematical Sciences, New Jersey Institute of Technology (October-December 2013)

8.4.1.2. Internships

- Thi-Phong Nguyen (March-August 2013)
- Mohamed Lakhel (February-June 2013)
- Ahmed Aaddaj Eloudrhiri February 2013-June 2013
- Isaac Harris May 2013-July 2013
- Shixu Meng May 2013-August 2013
- Khieu Van NGUYEN, April-July 2013.

9. Dissemination

9.1. Scientific Animation

- Grégoire Allaire is the President of SMAI (Société de Mathématiques Appliquées et Industrielles). Until November 2013 he was also the director of the Gaspard Monge program on optimization (PGMO) at the Jacques Hadamard Mathematical Foundation. He is a board member of Institut Henri Poincaré (IHP). He is a member of the following editorial boards: book series "Mathématiques et Applications" of SMAI and Springer, ESAIM/COCV, Structural and Multidisciplinary Optimization, Discrete and Continuous Dynamical Systems Series B, Computational and Applied Mathematics, Mathematical Models and Methods in Applied Sciences (M3AS), Annali dell'Università di Ferrara, OGST (Oil and Gas Science and Technology).
- Houssein Haddar is a guest editor (jointly with Fioralba Cakoni) of a special issue of Inverse problems on transmission eigenvalues.
- Jing-Rebecca Li is an Associate Editor of the SIAM Journal on Scientific Computing.

9.1.1. Conference / school organization

- H. Haddar was co-organizing chair of the Waves 2013 conference, June 3-7, Gammath, Tunisia <http://www.lamsin.tn/waves13/>
- H. Haddar is co-organizer of the conference "International Conference on Novel Directions in Inverse Scattering", Honoring David Colton, July 29 - August 2, 2013 University of Delaware, Newark DE, USA <http://www.cmap.polytechnique.fr/~colton/>.

- H. Haddar is co-organizer of the Franco-German Summer School “Inverse Problems and Partial Differential Equations” University of Bremen, October 7-11, 2013 <http://www.math.uni-bremen.de/zetem/ip-school2013>
- J.-R. Li is a co-organizer of the mini-symposium "Simulation and modeling applied to diffusion magnetic resonance imaging" at the SIAM Computational Science and Engineering Conference Feb 2013.

9.1.2. Conference attendance

- H. Haddar
 - Oberwolfach Conference on “Computational Electromagnetics and Acoustics”, Oberwolfach, Jan 20 - 26, 2013
 - Conference “Inverse Problems: Scattering, Tomography and Identification Problems” on the occasion of Andreas Kirsch’s 60th birthday, Karlsruhe, Apr 6 - 11, 2013.
 - IFIP TC7.2 Workshop: “Electromagnetics — Modelling, Simulation, Control and Industrial Applications”, Berlin, May 13 – 17, 2013.
 - International Conference on “Mathematical and Numerical Aspects of Waves” (Waves 2013), Gammarth, Tunisia, June 3 - 7, 2013.
 - International Conference on “Novel Directions in Inverse Scattering”, Honoring David Colton, July 29 - August 2, 2013 University of Delaware, Newark DE.
 - Workshop “Journées d’Analyse Numérique et d’Optimisation” (JANO10), Essaouira, Oct 31 - Nov 02, 2013.
- G. Allaire
 - Workshop on Numerical Methods for Optimal Control and Inverse Problems, Munich, (march 2013).
 - Interpore conference, Prague (may 2013).
 - Conference in the honor of M. Vogelius, Luminy (may 2013)
 - SMAI conference, Seignosse (june 2013).
 - Conference Waves, Tunis (june 2013).
 - Workshop "New trends in Shape Optimization", Erlangen (september 2013).
 - 1st French-Mexican Meeting on Industrial and Applied Mathematics, Villahermosa, Mexique (novembre 2013).

9.2. Teaching - Supervision - Juries

9.2.1. Teaching

Licence: O. Pantz, Tutorial Classes in "Numerical analysis et Optimization", 64h, L3, École Polytechnique.

Licence: H. Haddar, Tutorial Classes in "Numerical analysis et Optimization", 64h, L3, École Polytechnique.

Licence: Grégoire Allaire teaches a semester course on numerical analysis and optimization in the second year (senior undergraduate level). See the web page: http://www.cmap.polytechnique.fr/~allaire/cours_X_annee2.html

Master: Grégoire Allaire teaches a course on optimal design of structures in the third year (first year of a Master program). See the web page: http://www.cmap.polytechnique.fr/~allaire/cours_X_majeure.html

Master: Grégoire Allaire teaches together with François Golse a course on transport and diffusion in the third year (first year of a Master program). See the web page: http://www.cmap.polytechnique.fr/~allaire/cours_map567.html

Master: Grégoire Allaire teaches together with François Alouges a course on homogenization in the fourth year (second year of a Master program). See the web page: <http://www.cmap.polytechnique.fr/~allaire/homogenization.html>

Master: Housseem Haddar teaches together with Laurent Bourgeois a course on "Inverse problems: mathematical analysis and numerical algorithms" (M2, AN&EDP, Paris 6 and Ecole Polytechnique).

9.2.2. Supervision

PhD in progress: L. Azem, Fracture and damage: Modeling and Simulation, Olivier Pantz (with Zorgati).

PhD in progress: H. T. Nguyen, Simplified models and inverse problems for diffusion MRI, 2011, Jing-rebecca Li (with Denis Grebenkov and Cyril Poupon).

PhD in progress: D. V. Nguyen, Efficient finite-element method to solve PDE problems in diffusion MRI, 2011, Jing-Rebecca Li (with Denis Grebenkov).

PhD in progress: G. Michailidis, On topology optimization with feasibility constraints, 2010, Grégoire Allaire (with F. Jouve)

PhD in progress: Z. Jiang, Eddy current probing of axisymmetric tubes, 2010, Housseem Haddar.

PhD in progress: M. Chamaillard, Effective boundary conditions for thin periodic coatings, Ecole Polytechnique, 2011, Housseem Haddar (with P. Joly).

PhD in progress : L. Audibert, Non-destructive testing of concrete like materials, 2012, Housseem Haddar.

PhD in progress : T. Mercier, data assimilation for temprature estimates of nuclear fuel powerplant, 2012, Housseem Haddar.

Ph.D. in progress: Gabrielle Fournet, Inclusion of blood flow in micro-vessels in a new dMRI signal model, 2013, Jing-Rebecca Li (with Luisa Ciobanu).

Ph.D. in progress: Simona Schiavi, Homogenized models for Diffusion MRI, 2013, Housseem Haddar and Jing-Rebecca Li.

Ph.D. in progress: Thi-Phong Nguyen, Inverse scattering for perturbed periodic media, 2013, Housseem Haddar.

Ph.D. in progress: Mohamed Lakhal, Radar Imaging of buried mines, 2013, Housseem Haddar.

PhD: G. Migliorati, Electrostatic Imaging with uncertain backgrounds, April 2013, H. Haddar and F. Nobile.

PhD: F. Ouaki, On multi-scale numerical methods for multiphase transport in porous media, 2013, Grégoire Allaire.

PhD: G. Delgado, Optimal design of the draping of composite materials, 2013, Grégoire Allaire.

HdR: Jing-Rebecca Li, "Modélisation et simulation de la diffusion", Université Paris Sud, 16 dec, 2013.

10. Bibliography

Publications of the year

Doctoral Dissertations and Habilitation Theses

- [1] J.-R. Li, *Modélisation et simulation de la diffusion*, Université Paris Sud - Paris XI, December 2013, Habilitation à Diriger des Recherches, <http://hal.inria.fr/tel-00925028>

- [2] G. MIGLIORATI. , *Approximation polynômiale par projection L2 discrète aléatoire et application aux problèmes inverses pour les EDP à coefficients stochastiques*, Ecole Polytechnique X, April 2013, <http://hal.inria.fr/pastel-00879543>

Articles in International Peer-Reviewed Journals

- [3] G. ALLAIRE, M. PALOMBARO, J. RAUCH. *Diffraction of Bloch Wave Packets for Maxwell's Equations*, in "Communications in Contemporary Mathematics", 2013, vol. 15, n^o 6 [DOI : 10.1142/S0219199713500405], <http://hal.inria.fr/hal-00932946>
- [4] L. AUDIBERT, H. HADDAR. *A generalized formulation of the Linear Sampling Method with exact characterization of targets in terms of farfield measurements*, in "Inverse Problems", 2013, <http://hal.inria.fr/hal-00911692>
- [5] Y. BOUKARI, H. HADDAR. *The Factorization method applied to cracks with impedance boundary conditions*, in "Inverse Problems and Imaging", 2013, vol. 7, n^o 4, <http://hal.inria.fr/hal-00768729>
- [6] F. CAKONI, N. CHAULET, H. HADDAR. *On the asymptotics of a Robin eigenvalue problem*, in "Comptes Rendus Mathématique", 2013, vol. 351, pp. 517-521 [DOI : 10.1016/J.CRMA.2013.07.022], <http://hal.inria.fr/hal-00907355>
- [7] F. CAKONI, H. HADDAR. *Transmission eigenvalues*, in "Inverse Problems", 2013, vol. 29, n^o 10, Editorial [DOI : 10.1088/0266-5611/29/10/100201], <http://hal.inria.fr/hal-00911761>
- [8] M. CHAMAILLARD, N. CHAULET, H. HADDAR. *Analysis of the factorization method for a general class of boundary conditions*, in "Journal of Inverse and Ill-posed Problems", 2013, Submitted, <http://hal.inria.fr/hal-00783288>
- [9] J. COATLÉVEN, H. HADDAR, J.-R. LI. *A macroscopic model including membrane exchange for diffusion MRI*, in "SIAM Journal on Applied Mathematics", 2013, Accepted, <http://hal.inria.fr/hal-00768732>
- [10] A. COSSONNIÈRE, H. HADDAR. *Surface integral formulation of the interior transmission problem*, in "Journal of Integral Equations and Applications", 2013, <http://hal.inria.fr/hal-00759128>
- [11] B. DELOURME, H. HADDAR, P. JOLY. *On the Well-Posedness , Stability And Accuracy Of An Asymptotic Model For Thin Periodic Interfaces In Electromagnetic Scattering Problems*, in "Mathematical Models and Methods in Applied Sciences", 2013, <http://hal.inria.fr/hal-00682357>
- [12] D. GREBENKOV, H. T. NGUYEN, J.-R. LI. *A fast random walk algorithm for computing diffusion-weighted NMR signals in multi-scale porous media: A feasibility study for a Menger sponge*, in "Microporous and Mesoporous Materials", September 2013 [DOI : 10.1016/J.MICROMESO.2013.02.040], <http://hal.inria.fr/hal-00925065>
- [13] H. HADDAR, R. KRESS. *A conformal mapping method in inverse obstacle scattering*, in "Complex Variables and Elliptic Equations", 2013, <http://hal.inria.fr/hal-00768726>
- [14] H. HADDAR, A. LECHLEITER, S. MARMORAT. *An improved time domain linear sampling method for Robin and Neumann obstacles*, in "Applicable Analysis", 2013, pp. 1-22 [DOI : 10.1080/00036811.2013.772583], <http://hal.inria.fr/hal-00768725>

- [15] H. HADDAR, G. MIGLIORATI. *Numerical analysis of the factorization method for EIT with a piecewise constant uncertain background*, in "Inverse Problems", May 2013, vol. 29, n^o 6 [DOI : 10.1088/0266-5611/29/6/065009], <http://hal.inria.fr/hal-00768734>
- [16] J.-R. LI, D. CALHOUN, C. POUPON, D. LE BIHAN. *Numerical simulation of diffusion MRI signals using an adaptive time-stepping method*, in "Physics in Medicine and Biology", December 2013 [DOI : 10.1088/0031-9155/59/2/441], <http://hal.inria.fr/hal-00763888>
- [17] O. OZDEMIR, H. HADDAR. *Linearized Cauchy Data Inversion Method for Two-Dimensional Buried Target Imaging*, in "IEEE Transactions on Antennas and Propagation", 2013, vol. 61, n^o 6, <http://hal.inria.fr/hal-00796488>
- [18] C.-H. YEH, B. SCHMITT, D. LE BIHAN, J.-R. LI, C.-P. LIN, C. POUPON. *Diffusion Microscopist Simulator: A General Monte Carlo Simulation System for Diffusion Magnetic Resonance Imaging*, in "PLOS ONE", October 2013 [DOI : 10.1371/JOURNAL.PONE.0076626], <http://hal.inria.fr/hal-00925091>

Research Reports

- [19] O. PANTZ, K. TRABELSI. , *A new non linear shell modeling combining flexural and membrane effects*, 2013, <http://hal.inria.fr/hal-00784179>

Other Publications

- [20] S. MENG, H. HADDAR, F. CAKONI. , *The Factorization Method for a Cavity in an Inhomogeneous Medium*, 2013, <http://hal.inria.fr/hal-00936557>